



**Metra
Electronic
Locking
System
for
companies,
hotels,
schools,
universities,
etc.**



Metra
inženiring d.o.o.

Špruha 19
1236 Trzin
Slovenia
tel.: +386 1 561 07 40
fax: +386 1 561 07 44
www.metra.si

ELS ASSIGN

SYSTEM DESCRIPTION



- Improves your service & facility management.
- Existing RFID cards can be used as a Locker Key.
- Use electronically controlled lockers for companies, hotels, schools, universities, etc.
- Simple and user-friendly user interface
- For permanent and/or short term users.
- Alarm in case of locker break-in.
- Easy to set-up through setup interface or Metra software.
- On-line locker management with Metra software.
- Other Metra devices can be easily integrated into the system.

FIELDS OF APPLICATION

Metra ELS Assign is an automated locker assigning system, where as a key RFID (Radio Frequency Identification) media, PIN code or a fingerprint (optional) is used. RFID media is usually in the form of cards and bracelets or it can also be in the form of different pendants, watches, etc.

Extended network configuration enables assigning lockers from the Metra PC software and remote locker management.

The system is suitable for use in schools, colleges, factories, companies, etc. for daily or short term users, as well as for permanent users.

Because the system is open, existing cards for access control or "Loyalty" cards can be used as a locker keys.

User interface

Display serves as user interface. Two different versions are available for different fields of application.



Display Keypad: 4 digit LED display with built in keypad to enter PIN code.



Display Combo: 4 digit LED display and a combination of keypad to enter PIN code and RFID reader.

Additional modules:

- The fingerprint sensor can be used as an alternative to RFID media and/or PIN code.

HOW THE ELS ASSIGN SYSTEM OPERATES



Assigning the locker

All the lockers (vacant and occupied) have locked door. Display automatically offers a random vacant locker to a user. User can reject the selection and or confirms it by:

- a) By entering a PIN code. PIN code can be (depending from the set-up) from one to four digits long.
- b) Presenting RFID media to the built-in reader.
- c) Placing his finger on the fingerprint sensor.

Assigned locker unlocks and opens. User stores in his belongings and the locker locks back automatically when the door is closed.

Unlocking the locker

- a) User enter his locker number and confirms it by pushing enter on the display. While sign PIN is flashing on the display he enters the chosen PIN code.
- b) User approaches the RFID media to the reader.
- c) User lays his finger on the fingerprint sensor.

When the PIN code/RFID media/finger is recognized as a valid locker key, user needs to select if he wants to keep using the locker or to free it for another user. After the selection is made locker unlocks and opens. If the parameter "Free" is set to "OFF" the selection is not needed, the locker is automatically freed, unlocked and opened. For permanent users locker unlocks and opens without any selection needed. User takes out his belongings and the locker locks back automatically when the door is closed. If user chose to keep the locker, he/she can unlock it again and if he/she chose to free it, the locker is available for another user.

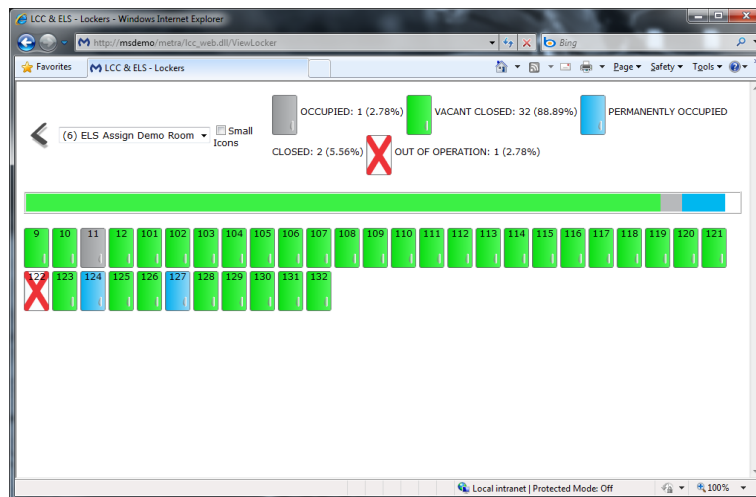
Security features:

- Master keys (PIN code or RFID media) for system administrators. Master keys allow opening of any locker or group of lockers.
- Pushbutton for emergency opening all, to particular device, connected lockers is integrated on the Locker Controller.
- Remote opening of any locker from PC workstation (just with Metra software).
- Alarm in case of locker break-in.

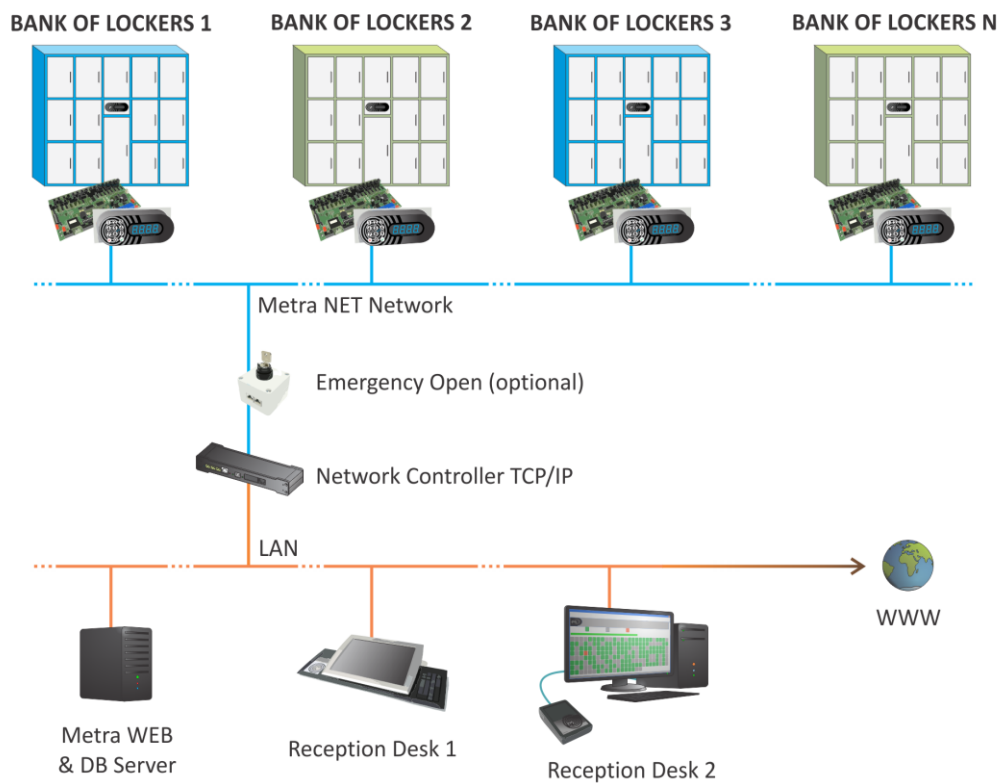
METRA SOFTWARE (OPTIONAL)

By using Metra ELS software we gain following functionalities:

- Assigning lockers from the Metra software.
- Locker occupancy monitoring from any computer connected into a LAN network and equipped with Metra software.
- Management of »master« and »setup« keys through Metra software.
- Faster and easier setting of parameters for devices.
- The possibility of remote unlocking through software.
- The possibility of unlocking all lockers at a pre-set time.
- Alarm in case of break-in.



ELS ASSIGN COMPONENTS



- Electronic lock
- Locker Controller
- Display Keypad/Combo
- Network controller NET or Network controller TCP/IP
- Desktop POS reader USB
- Metra ELS and Metra POS software (OPTIONAL)

For more detail components descriptions please see our web site (www.metra.si) or contact our sales department. See also ELS ASSIGN Product Catalogue.